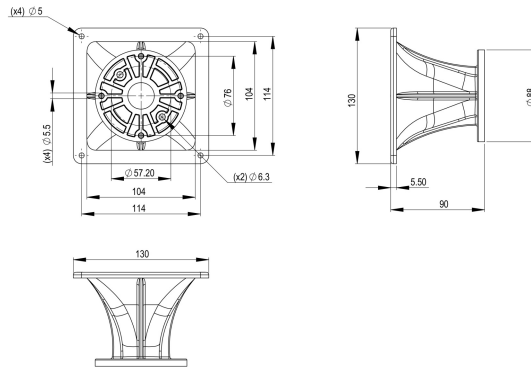


# ME10v2

0Ω

Horns - 1.0 Inches



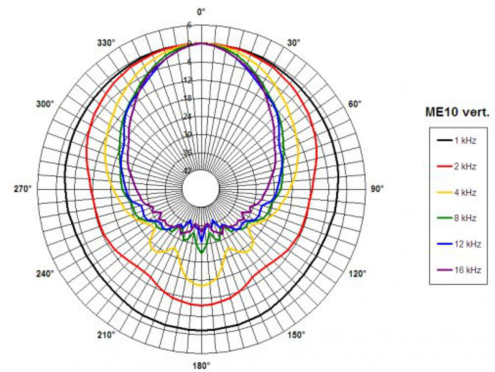
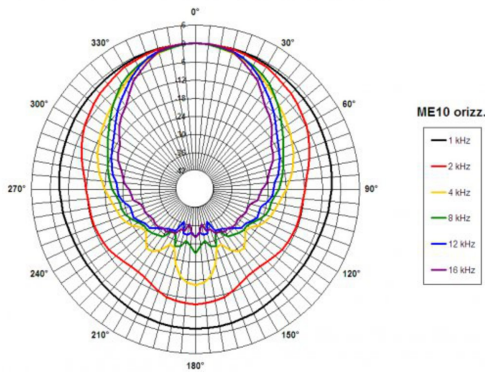
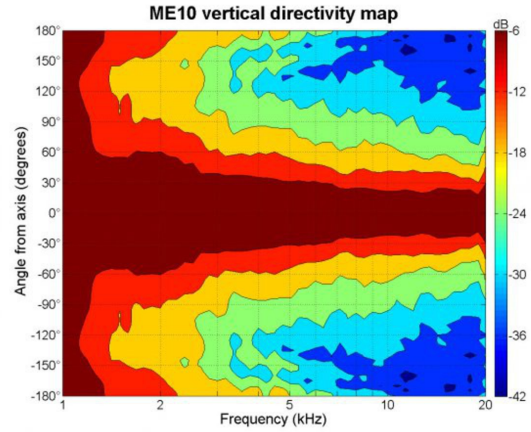
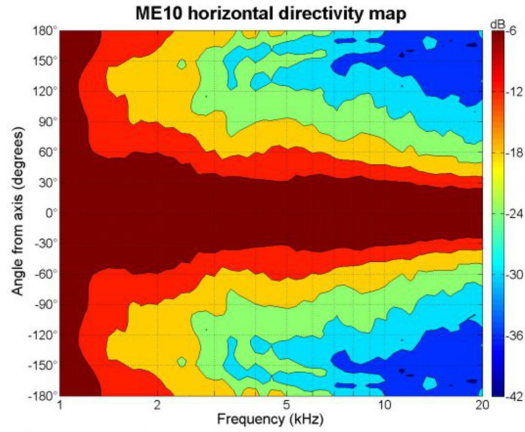
- 1" throat entry
- 90° x 60° nominal coverage
- Hyperbolic Cosine Flare
- Excellent loading down to 1.5 kHz



The ME10v2 replaces the ME10. The revised design adds two additional mounting holes to expand driver compatibility. The ME10v2 should be backwards compatible with most previous applications for the ME10, but we recommend that all users check the product revised drawings, to be certain.

# ME10v2

Horns- 1.0 Inches



## SPECIFICATIONS<sup>1</sup>

Throat Diameter	25 mm (1.0 in)
Nominal Coverage Horizontal	90 °
Nominal Coverage Vertical	60 °
Cutoff Frequency	1.5 kHz
Material	ABS
Design	Hyperbolic Cosine Flare
Dimensions	130.5x130.5x90 mm (5.1x5.1x3.5 in)

## MOUNTING AND SHIPPING INFO

Baffle Cutout Dimension	104x104 mm (4.1x4.1 in)
Air Volume Occupied by Horn	0.15 dm <sup>3</sup> (0.01 ft <sup>3</sup> )
Net Weight	0.15 kg (0.33 lb)
Shipping Units	20
Shipping Weight	6.0 kg (13.2 lb)
Shipping Box	540x350x390 mm (21.2x13.8x15.3 in)

Other Details  
 4x 5.5 mm (0.22 in) holes 90° on 76 mm (3 in) diameter --- 2x 6.3 mm (0.25 in) holes 180° on 57.2 mm (2.26 in) diameter

1. Horn mounted on B&C DE 10 compression driver.